

Quarterly Gold Canyon Transportation & Safety Update

GCCI – June 2023

Thank you for taking the time to read about transportation and safety progress and upcoming plans for Gold Canyon. This is a quick summary of planned and recent activity in our Community.

Please let us know of other transportation items you would like to hear about or discuss in future updates.

Planning Items

1. There are two in-depth **Transportation planning studies** being conducted over the next 12 months. The first is the Superstition Vista's multimodal plan which covers the northern portion of Pinal County and focuses on regional transportation growth.

You can provide input to this survey until June 30:

Survey Link: <https://www.surveymonkey.com/r/8GTYYPB>

Visit the Project Website: <https://azmag.gov/svmtps>

2. The second Transportation planning study will develop the **Gold Canyon circulation plan**. To date, the consultant has captured data from the peak Renaissance traffic weekends and have focused on two areas – the manual control of signals and the choke-point for visitors entering the park. Their research and recommendations will be implemented during next season's Festival.

In parallel they are compiling the baseline traffic information for our area, both within Gold Canyon and neighboring communities. After the baseline is established, they will run models to integrate longer-term traffic projection increases on US-60 from feeder traffic across the region.

Gold Canyon residents will have an opportunity to submit comments via a survey on the **Gold Canyon circulation plan** in the fall as seasonal residents return.

3. The ADOT recommendation to provide safer **eastbound left turn lanes at Superstition Mountain; Mountainbrook and Kings' Ranch Road intersections** is expected to be part of the circulation studies. These projects will then be integrated into the ADOT 5-year planning cycle.

4. Similarly, the concept to **widen Kings' Ranch Road northward beyond Alhambra** will be part of the circulation study.

5. The **Peralta Trail paving project** to the trailhead is included in the regional Transportation Plan. Implementation details will be provided as the project timing is finalized.
6. The legislature and the County are in agreement to provide start-up funding to extend **SR-24 to connect US-60 south of the Renaissance property**. The first step involves right-of-way access across Arizona State Land property.
7. Funding is being targeted to provide an **overpass interchange at Ironwood and SR-24**. This will relieve the bottleneck projected with the commercial and residential expansion in Apache Junction; Queen Creek and San Tan.
8. GCCI is partnering with Apache Junction and the County to develop a **multi-use trail** between S Goldfield Road and S Superstition Mountain Drive. This will be a paved multi-use trail for pedestrians, bikes and equestrian. The trail will also provide maintenance access for AZDOT to highway 60 and emergency ingress egress to Gold Canyon. Included in the plan is to route the Lost Dutchman Marathon runners off of US-60, improving safety and traffic impact during that event.

Local Gold Canyon Transportation & Safety Items

1. The traffic analysis along Sleepy Hollow and **Peralta Canyon Way has been completed**. The draft report includes several alternatives for traffic calming mitigation. The next step will be a public survey to obtain opinions and feedback on the traffic calming options. Following this, a public meeting will be held to review the survey results, alternatives, and next steps.
2. Traffic **calming speed humps** have been added to Birdie Lane in Mountainbrook Village to reduce speed and will discourage passthrough cross-community traffic.
3. A **right-hand turn lane off Kings' Ranch Road to Sleepy Hollow** is entering the design stage to make that intersection safer.
4. Bids have been received for the new "pedestrian – activated" signal crosswalk **between the United Methodist Church and their Mission Center** and Food bank on Kings' Ranch Road.
5. The County will soon install **two school zone flashing speed limit signs** at the Peralta school.
6. The site plan for the new **Maverik service station** at the corner of Kings' Ranch Road and US-60 is nearing completion. A second northbound lane on Kings' Ranch Road, starting at Walgreen's is part of the plan. Negotiations with ADOT are underway to establish the 2nd left turn lane off eastbound US-60 at Kings Ranch Road. (See the site plan layout below)

7. The Pinal County Highway Department Vegetation Control **crew trimmed trees and graded shoulders** on Palm Way, Easy Street and Cordova. This improved visibility and improved safety at the Kings Ranch Road / Palm Way intersection triangle.

8. A request has been submitted **to remove the large number of dry weeds** which present a fire hazard on the Post Office land at KRR and Sleepy Hollow.

9. Gold Canyon Strong organized a very successful volunteer clean up on **Peralta Trail roadway** on Saturday, June 17.

10. There are many vacant residential parcels under development in the Cloudview area. Some of these properties extend to the US Forest Service boundary and will **restrict trail access** in that area.

Please reach out to me or any member of the GCCI team if you have any questions or traffic and safety issues you are concerned with.

Don't forget, **you can also request Pinal County to do road or safety maintenance in your neighborhood by filling out the form on their website.**

Road Maintenance Request: [\[Pinal County\] Report Road Maintenance Issue \(seamlessdocs.com\)](#)

Enjoy your summer!

Jerry Stevenson, Chair

Transportation & Safety Committee

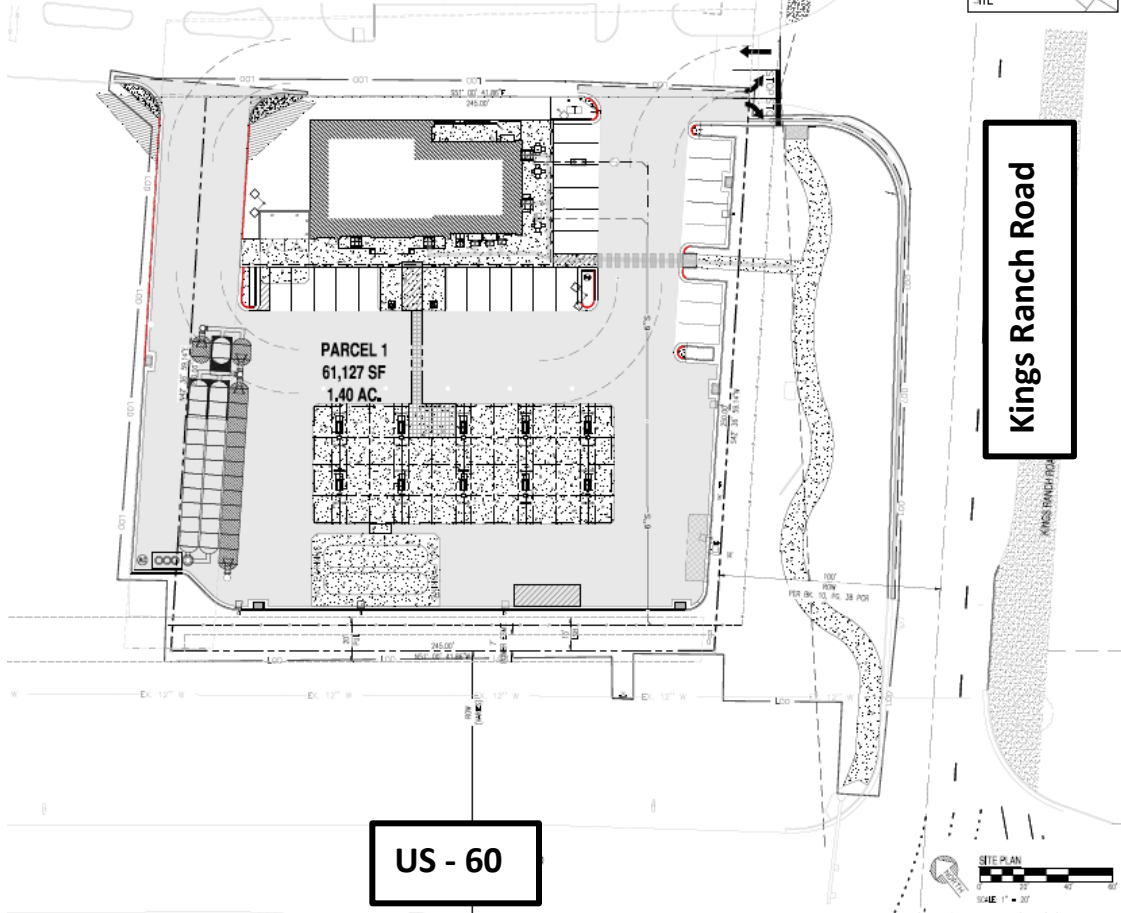
Gold Canyon Community, Inc (GCCCI)

206-290-0173

geraldbstevenson@gmail.com

**MAVERIK CONVENIENCE STORE
OVERALL SITE PLAN**

6940 S. KINGS RANCH RD., GOLD CANYON, AZ 85118
A PORTION OF THE SOUTHWEST QUARTER OF SECTION 08, TOWNSHIP 1 SOUTH, RANGE 9 EAST OF THE 014 AND
SALT RIVER MERIDIAN, PINAL COUNTY, ARIZONA.



**PARCEL 1
61,127 SF
1.40 AC.**

US - 60

Kings Ranch Road



**SUSTAINABILITY
ENGINEERING
GROUP**
SPECIAL REGISTERED PROFESSIONAL ENGINEERS
WWW.SUSTAINABILITYENGINEERING.COM TEL: 480.828.7238 FAX: 480.828.8188



PROJECT: MAVERIK CONVENIENCE STORE
PROJECT NO.: 04180000
LOCATION: 6940 S. KINGS RANCH RD., GOLD CANYON, AZ 85118

DATE: 04/18/2020
PERMITS:

DATE:	04/18/2020
SCALE:	1" = 20'
PROJECT NO.:	04180000
DATE:	02/01/21

OVERALL SITE PLAN
6 OF 30 **C2.01**

THE DRAWING IS THE PROPERTY OF SUSTAINABILITY ENGINEERING GROUP AND SHALL REMAIN THE PROPERTY. THE USE OF THIS DRAWING IS LIMITED TO THE ORIGINAL SITE FOR WHICH IT WAS PREPARED AND IS NOT TO BE REPRODUCED OR TRANSMITTED IN ANY FORM OR BY ANY MEANS, ELECTRONIC OR MECHANICAL, INCLUDING PHOTOCOPYING, RECORDING, OR BY ANY INFORMATION STORAGE AND RETRIEVAL SYSTEM, WITHOUT THE WRITTEN PERMISSION OF SUSTAINABILITY ENGINEERING GROUP.